

VIDEOS

successful living history week held at Kenilworth Castle in conjunction with Coventry schools. The video includes interviews with teachers involved in the project about the organisation beforehand and film of the event itself.

Suitability: Key Stage 2; teacher training
28 minutes; 1988

Free loan only

Product code: XT 14029

Alternatively, copies can be purchased (price £13.60 including postage) from Elm Bank Teachers' Centre, Mile Lane, Coventry CV1 2LQ.

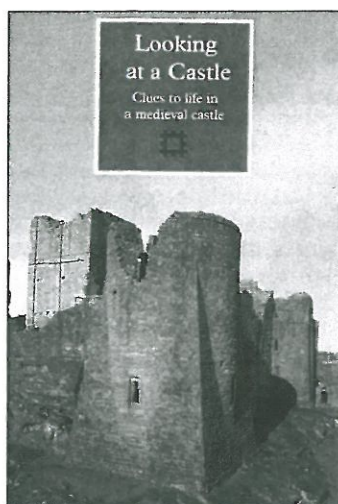
Looking at an Abbey

Filmed at Rievaulx Abbey this video shows how much we can learn from a typical Abbey if we understand how the Cistercian monks who lived there organised their lives.

Suitability: Key Stages 2 & 3
17 minutes; 1980
£11.95

Product code: XT 13090

See also Education on Site and Discovery Packs



Looking at a Castle
Clues to life in a medieval castle

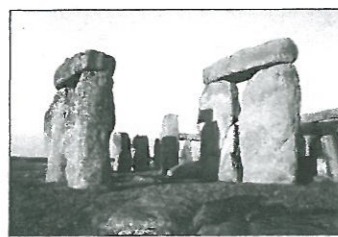
Looking at a Castle

Uses the remains of the fortifications and domestic quarters of Goodrich Castle in Hereford and Worcester to explain the complex arrangements of life in a medieval castle through the investigation of clues left behind in the building.

Suitability: Key Stages 2 & 3; 6th form general studies; adult education.
14 minutes; 1980
£11.95

Product code: XT 13091

See also Education on Site, Teacher's Handbooks and Posters



Looking at Prehistoric Sites

The video sets out to tell the story of the ancient peoples who built the great prehistoric monuments of Britain by looking at the evidence left behind.

Suitability: Key Stages 2 & 3
20 minutes; 1982
£11.95

Product Code: XT 13092

The Norman Conquest of England

This video shows how effective the Norman Conquest was. It altered not only building styles, but our landscape and language as well.

Suitability: Key Stage 2 and 3; GCSE; adult education.
15 minutes; 1982
£11.95

Product code: XT 13093

The Past Replayed - Kirby Hall

English Heritage and Northamptonshire Education Authority worked on a living history project for children with special needs at Kirby Hall set in the year AD1590. The film plots the thinking behind the project, its preparation and follow-up.

Suitability: First section In-service training; special needs teachers. Second section Key Stages 2 & 3.
38 minutes; 1988
£11.95

Product code: XT 13094

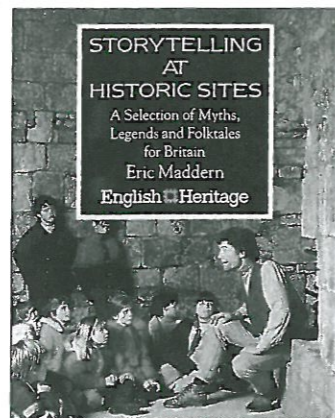
Sitework

This video shows the various uses that schools can make of an historic house as a resource for project work. Making drawings, prints, paintings and creating poems are some of the more obvious approaches. An alternative approach would be to use its architecture as the basis for a mathematical investigation.

Suitability: Key Stages 2 & 3
Initial teacher training; In-service training
18 minutes; 1987
£11.95

Product code: XT 13097

AUDIO & SOFTWARE



Storytelling At Historic Sites - a selection of myths, legends and folktales for Britain
Told by Eric Maddern

This audio-cassette pack contains twenty stories set to music ranging from Greek myths, iron age, Roman, Celtic, Saxon and Viking tales to medieval and Stuart stories. All are suitable for telling at sites as a way of bringing the spirit of ancient places alive for children.
2x90 minute cassettes; 1992
£9.95

Product code: XP 10078

See also Education on Site

Special Offer

Order the Storytelling book and cassette pack together for the special price of £13.50, a saving of 15% on the individual prices.

Product code: XP 10076

The Roman Conquest of Britain

This software package aims to involve pupils at Key Stages 2 & 3 in a variety of experiences connected with the Roman invasion and conquest of Britain by computer assisted simulation. It consists of four modules and a teacher's handbook, providing up to a term's work. The modules, Invasion, Advance to the West, Revolt and the Northern Frontier, transport pupils back in time where they take on the role of a real character involved in a series of events. Decision making is an important element of the package. The teacher's hand-

book gives full directions for the use of the package and provides further information on many aspects of the Roman invasion of Britain, suggesting National Curriculum links throughout the programme.

Suitability: Key Stages 2 & 3.
Compatible with BBC B and Acorn Archimedes 400 computers.

£18.95

Product codes:

XQ 10317 - BBC B

XQ 10341 - Archimedes 400

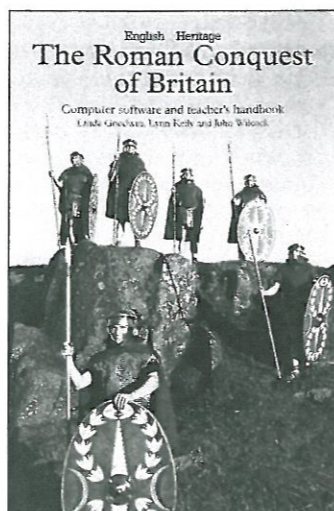
Digging Deeper into History - a classroom resource pack

Roger Martlew/NCET

This computer-based simulation explores the impact of a new gas pipeline on eastern Yorkshire. Although designed primarily for teaching history and archaeology, the simulation can also be used as part of a geography or environmental studies course. Using datafiles together with worksheets and resource cards, pupils investigate the impact of the different routes on archaeological sites and the landscapes and take on different roles in planning applications before producing a report on their findings.

Compatible with BBC B, BBC Master, RM480Z and RM Nimbus computers.
English Heritage/NCET, 1989
ISBN 1-85074-236-7
Suitability: Key Stages 2 & 3; GCSE; adult education
£29.95

Product code: XQ 13069



Using Portraits

Susan Morris

These slides have been chosen to illustrate the range of material to be found in portraits. Accompanying notes discuss the various elements that can be examined, including clothing, facial expressions, pose and gesture, background and accessories, size, medium and composition.

12 slides with 8 pages of teacher's notes in plastic wallet; 1989
ISBN 1-85074-260-X

£3.95

Product code: XS 13080

See also Education on Site

Victorian Osborne

These slides are all either archive photographs or nineteenth century paintings, some by Queen Victoria, of the Royal Family and their private home and estate on the Isle of Wight.

12 slides with 8 pages of teacher's notes in plastic wallet; 1987
£3.95

Product code: XS 13081

See also Teacher's Handbooks and General Books

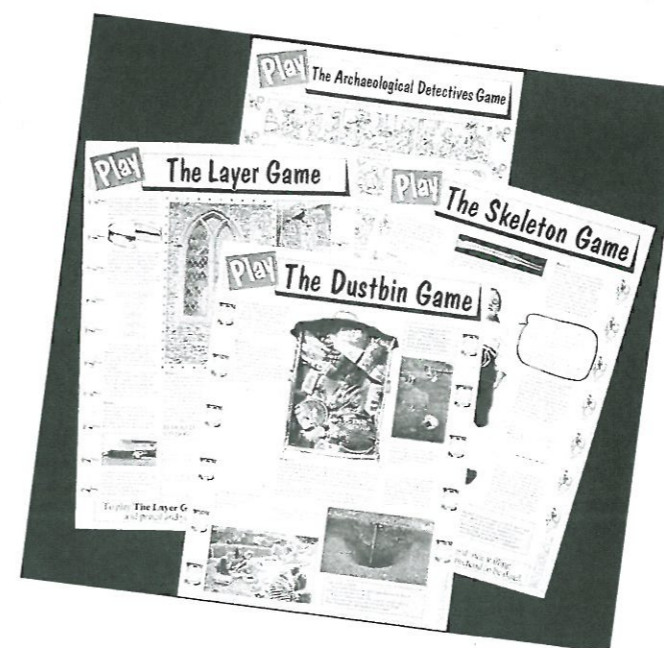
Archaeological Detectives Poster Games

This set of four posters encourages children to learn through playing investigative archaeological games.

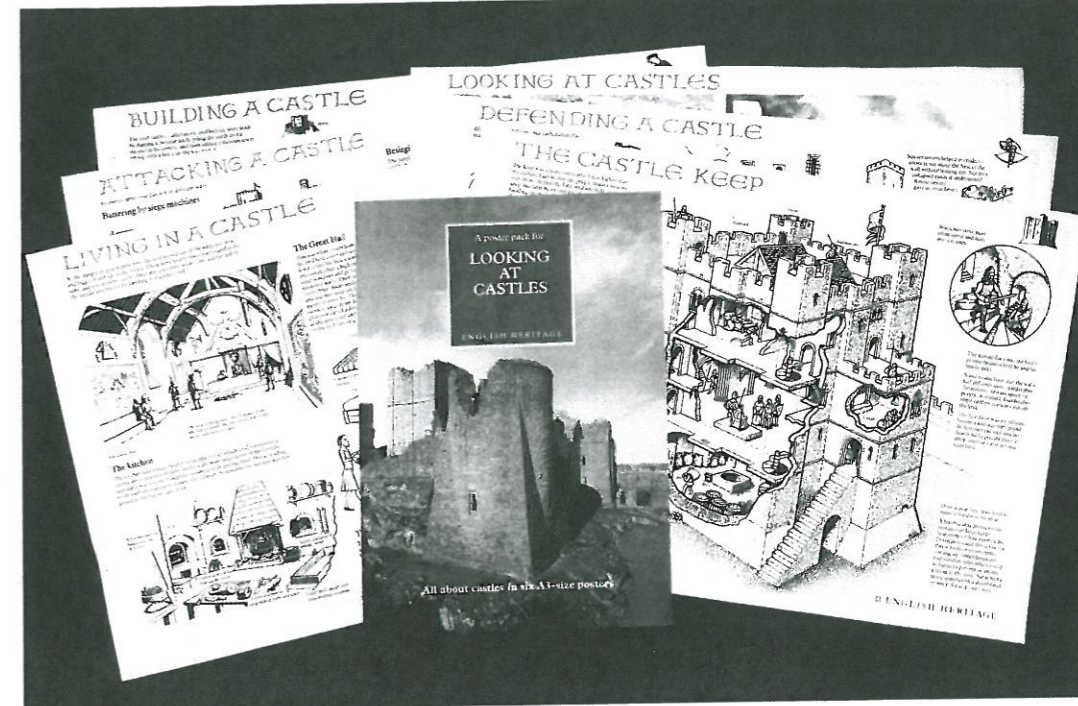
A3-size
£2.95

Product code: XR 13258

See also Videos



SLIDE PACKS & POSTERS



NEW

Looking at Castles

This pack of six A3-size posters uses lively drawings and descriptive text to bring to life aspects of medieval castles. They include building a castle; the castle keep; attacking a castle; defending a castle; living in a castle and looking at castles, which includes four artists' impressions showing different stages of castle development.
A3-size; two colours, 1994
ISBN 1-85074-490-4
£3.95

Product code: XR 10506

See also Education on Site and Videos

Castles and Later Fortifications

These are full colour aerial photographic posters with notes for teachers and suggested book list printed on the back.
680 x 480mm

Carisbrooke Castle £2.50
Product code: XR 13070

Deal Castle £2.50
Product code: XR 13071

Fort Brockhurst £2.50
Product code: XR 13073

Kenilworth Castle £2.50
Product code: XR 13074

Pickering Castle £2.50
Product code: XR 13075

Portchester Castle £2.50
Product code: XR 13076

Tilbury Fort £2.50
Product code: XR 13077

Tynemouth Castle and Priory £2.50
Product code: XR 13078

Stott Park Bobbin Mill
Illustrates the story of how a bobbin was made. Each stage of the process is illustrated with descriptive text.
A2-size; full colour.
£2.50
Product code: XR 13079
See also Videos

FREE EDUCATIONAL VISITS

Among the historic properties managed by English Heritage are many places which feature as landmarks in England's history - from prehistoric and Roman sites to medieval castles, great abbeys, historic houses, agricultural and industrial monuments. Educational group visits to over 350 English Heritage sites are absolutely free. Our **Free Educational Visits** booklet contains full details of how to book a free visit, where necessary, along with a county-by-county guide to all English Heritage properties and a booking form. Our free booklet, **Using the Historic Environment**, is packed with ideas and activities for National Curriculum study using the local environment. It has advice on making site visits from preparation to working on site and follow-up, as well as useful background information on conservation issues. To obtain free copies simply tick the boxes on the order form on the back page of this catalogue.

Dover Castle - Hellfire Corner

Using original footage, historical archives and documents this video traces the story of the underground tunnels beneath Dover Castle. Originally defences for the harbour, they were extended to form the major Second World War military HQ from which Dunkirk evacuation was master-minded. Part of the tunnel network, known as Hellfire Corner, now forms an exhibition and guided tour. Suitability: Key Stages 2 & 3 GCSE; adult education. 13 minutes; 1990

Free loan only
Product code: XT 11150



Grimes Graves

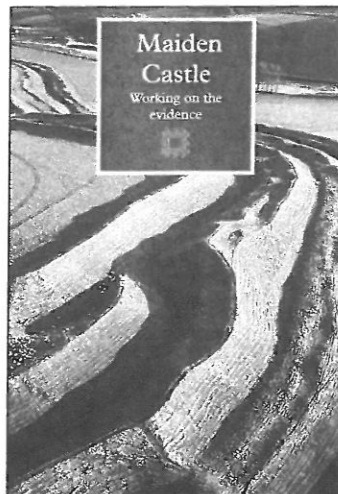
Grimes Graves in Norfolk, is the site of one of Britain's earliest industries - flint mining and its associated craft of flint knapping. The video investigates the mines and looks for evidence of how the neolithic miners extracted the flint. A professional flint knapper, John Lord, takes the viewer on a tour of the mines. Suitability: Key Stages 2 & 3 adult education. 12 minutes; 1988

£11.95
Product code: XT 13087

Also available with French commentary.

Maiden Castle - working on the evidence

The video uses Maiden Castle to exemplify what archaeology is all about. We follow a group of primary pupils working on the evidence on site and in the local museum in Dorchester. Through a series of 'dis-solves' the children are transformed into their iron age equivalents who defended the fort and the



Roman soldiers who stormed it. Suitability: Key Stages 2 & 3 21 minutes; 1987

£11.95
Product code: XT 13099
Also available with French commentary
See also General Books

Peveril Castle

Peveril Castle, with its twelfth-century stone keep, is dramatically situated on a spur high above Castleton in Derbyshire. This video considers the castle in relation to the town and the surrounding landscape. Suitability: Key Stages 2 & 3 13 minutes; 1990

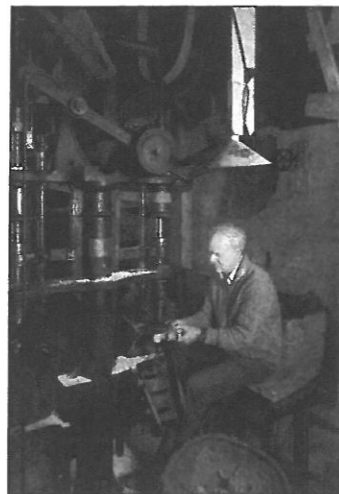
£11.95
Product code: XT 10569
See also Teacher's Handbooks



Pickering Castle

This royal castle developed from motte and bailey earthworks into an impressive stone structure with shell keep and towers. The video shows its evolution through reconstructions and close examination of parts of the building. The life of the castle is also portrayed. Suitability: Key Stages 2 & 3 14 minutes; 1986

£11.95
Product code: XT 13095
See also Posters



Stott Park Bobbin Mill - How a bobbin was made

This video traces the history of the mill, built in 1835 and typical of the many which supplied the spinning industry. A skilled craftsman demonstrates how bobbins were made. Suitability: Key Stages 2 & 3 15 minutes; 1993

£11.95
Product code: XT 10225
See also Posters

Frameworks of Worship

Churches provide a locally accessible and rich resource for study. This series introduces different aspects of the historical development of churches and considers some of the ways in which archaeologists gather and use information.

Buildings and Beliefs

This video explores the potential of the parish church as a medium for the study of medieval social structure and spirituality. Attention is drawn both to the archaeology of the fabric and to what can be learned from changes in the use of space within the building. Suitability: GCSE; 6th form general studies; teacher training; adult education. 20 minutes; 1990

£11.95
Product code: XT 10213

Chapels - the buildings of nonconformity

This video investigates the many forms of non-conformist worship since the passing of the Act of

Toleration in 1689 and asks what the archaeology of remaining buildings tell us about their relationship to the human and industrial landscape of villages and towns.

Suitability: GCSE; 6th form general studies; teacher training; adult education. 18 minutes; 1989

£11.95
Product code: XT 13086



God's Acre - nature conservation in the churchyard

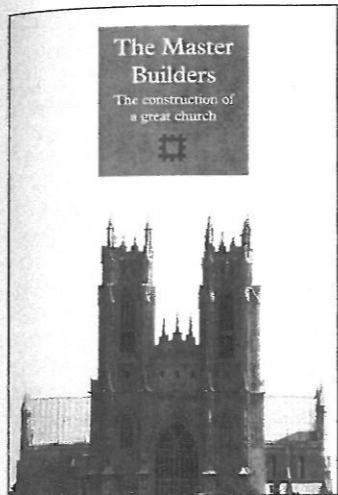
This video looks at various management techniques for the nature conservation of a churchyard. Only in the last twenty years has their full importance been realised. Churchyards are often the only place where traditional meadow plants can still flourish. They are also havens for wildlife.

Suitability: Churchyard management groups; GCSE; 6th form general studies; teacher training; adult education. 24 minutes; 1993
Price: £11.95
Product code: XT 10337

In Memoriam - the archaeology of graveyards

Ecology, archaeology, art and social history may all be approached through the evidence which graveyards contain. This video introduces and explores the links between them and suggests how the local graveyard may be used as an outdoor classroom. Suitability: GCSE; 6th form general studies; teacher training; adult education. 21 minutes; 1990

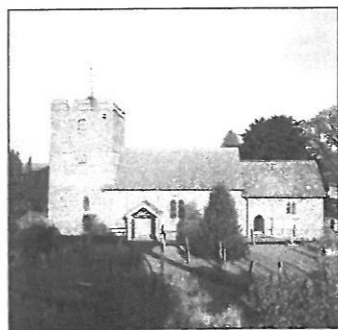
£11.95
Product code: XT 10504



The Master Builders - the construction of a great church

Medieval technology, engineering, and design are among the topics introduced in this video, which explores the building of a great church, Beverley Minster and illustrates how by looking at its fabric today we can illuminate the methods and organisation of the people who built it.

Suitability: GCSE; 6th form general studies; teacher training; adult education. 23 minutes; 1991
£11.95
Product code: XT 10571



Your Church - a threshold to history

This video is a guide to what you can observe and interpret from an ordinary parish church. Four specialists talk about their own approaches to exploring a graveyard, recording the fabric of a building with hi-tech, excavating beneath a church and using landscape history. Suitability: GCSE; 6th form general studies; teacher training; adult education. 23 minutes; 1987

£11.95
Product code: XT 13100

GENERAL VIDEOS

A Change of Heart - English architecture since the War

This video illustrates the unsuspected wealth and range of fine architecture and design created in England's cities, towns and countryside since the Second World War. Suitability: GCSE; 6th form general studies; adult education. 10 minutes; 1992

£11.95
Product code: XT 10060
See also General Books

Avebury - working on the evidence

This video gives teachers an idea of the varied opportunities which Avebury Circles and the nearby monuments offer. Children are shown investigating the sites under the guidance of a teacher and using the purpose built Education Centre with its handling collection and displays. Suitability: Key Stages 2 & 3 22 minutes; 1987

£11.95
Product code: XT 13098
See also Teacher's Handbooks

Changing Perceptions - presenting heritage

This is a case study of the complex conservation problems surrounding the World Heritage site at Avebury, Wiltshire. Perspectives on the presentation of the site are seen through the eyes of tourists, primary school children and an archaeology student from Zimbabwe.

Produced by the Department of Teaching Media, University of Southampton. Suitability: GCSE; A level; adult education. 25 minutes; 1990

Free loan only
Product code: XT 10987
Copies can be purchased, price £35 (inc. VAT and postage) from: Department of Teaching Media, 31 University Road, Southampton, SO9 5NH. Tel. 0703-592360.

Evidence of our lives

This video, divided into short sections, addresses the nature of physical evidence. It shows how children can develop skills by recording researching and interpreting their local environment. Suitability: Key Stages 2 & 3 27 minutes; 1991

£11.95
Product code: XT 11174



NEW

Flag Fen

This video is in three sections: Looking for Clues is for Key Stage 1 and Key Stage 2 pupils; The Time Trail is for Key Stage 3 pupils and The Flag Fen Trail is for use by teachers. They all examine the process of archaeology and show how it has revealed the fascinating details of life at this Cambridgeshire fenland site during the bronze age and after. Suitability: Key Stages 1, 2 and 3. 30 minutes; 1993

£11.95
Product code: XT 10502

The Gripping Beast

This animated film explores the various ways in which the gripping beast style of ornamentation was employed in Viking art and shows examples including jewellery and stone carving. It traces the development of this creature and its gradual evolution over several centuries and two continents. Suitability: Key Stages 2 & 3 GCSE; adult education. 15 minutes; 1957

Produced by Teknisk Film Compagni, Denmark.
Free loan only
Product code: XT 12135

Handing on Our History

This video is intended to introduce the work of English Heritage, which presents over 350 Historic Properties to five million public visitors each year; advises and offers grants for historic buildings or conservation areas; funds rescue excavations and gives expert advice on conservation work. Suitability: GCSE; 6th form general studies; further education; adult education. 30 minutes; 1990

£11.95
Product code: XT 11149



Historic Site - a sculptor's view

The video records the work of a sculptor-in-residence at Dover Castle who developed programmes of art, design and technology for visiting schools and colleges. It suggests applications of ideas which teachers themselves could develop using any part of the historic environment. Suitability: Initial teacher training; in-service courses; all Key Stages and further education. 23 minutes; 1991

£11.95
Product code: XT 11664

Living History

This video outlines the various stages of setting up and carrying out living history projects at sites and in schools. Suitability: In-service training; Initial teacher training 21 minutes; 1986

£11.95
Product code: XT 13089
See also Education on Site

Living History - the Kenilworth project

This has been produced by Elm Bank Teachers' Centre, Coventry as a record of a

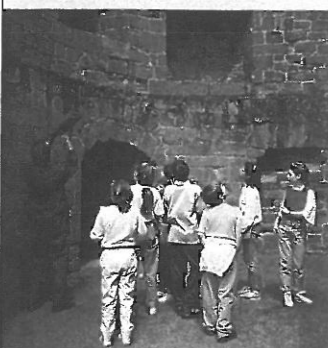
Our videos introduce sites and resources, and encourage investigate learning approaches by looking at physical evidence of the past. Many can be linked to visits to specific sites, either as part of preparation or follow-up. Some videos are for teacher training.

Free Video Loans

All our videos are available on free loan to teachers for study use within the school or institution. Up to four titles can be borrowed at a time for a period of two weeks. The copies may then be purchased if you so wish, or returned.

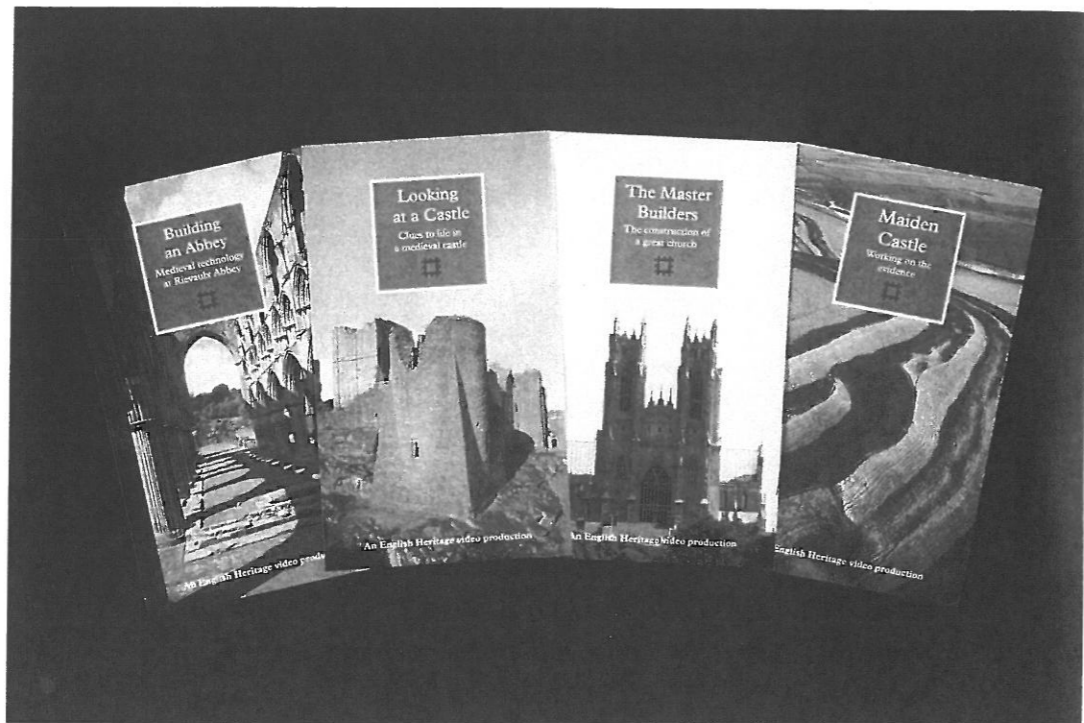
PLANNING A SITE VISIT?

Send off for your free loan copy of our introductory video using the order form below.



Learning from the Past

This introduces all the work of our Education Service, our support material and suggests how free educational visits to our sites can link into a wide range of subject work. We recommend that any teacher planning Programmes of Study or a visit borrows this on free loan. Suitability: In-service training; Initial teacher training; all Key Stages 11 minutes; 1991 **Free loan only** **Product code:** XT 11493



Teaching on Site

This series introduces approaches to using the historic environment with relation to Programmes of Study and Attainment Targets in National Curriculum Subjects.

Art, Music, English and Drama

We see a primary school class explore Dover Castle for work in art and music. A GCSE group carry out a number of projects in creative writing and drama. Suitability: In-service training; Initial teacher training. 25 minutes; 1992 **£11.95** **Product code:** XT 12081



Doorstep Discovery - working on a local history study

Carrying out local studies is an essential part of the National Curriculum in History. This video follows a group of teacher training students at Homerton College, Cambridge as they carry out a local history study of their own college and its immediate area. The video then fol-

lows two of the students on their first teaching practice as they put the theory to the test at a primary school in a small town. Student teachers and practising teachers will find the details of research into documents, landscapes, buildings and oral history useful. Suitability: Initial teacher training; In-service training. 30 minutes; 1993. **Price** £11.95 **Product code:** XT 10316

History and Geography

This video shows teachers of Key Stage 2 and 3 children preparing ideas and materials and sorting out the practicalities for a visit with two classes to investigate a castle and its surrounding landscape. We see work on site and follow-up in the classroom as well as an evaluation of the project with an Advisory Teacher. Suitability: In-service training; Initial teacher training. 22 minutes; 1991 **£11.95** **Product code:** XT 11494 **See also Education on Site**

The Key Stage 1 Curriculum

This video shows a project with Key Stage 1 pupils including a visit to an historic site. The video follows the project from planning by the class teacher through to follow-up and shows the children working in small

groups on site and in the classroom. Suitability: In-service training; Initial teacher training. 19 minutes; 1991 **£11.95** **Product code:** XT 11513

Maths, Science and Technology

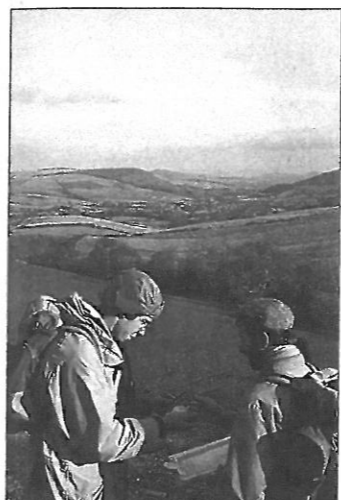
This video shows work in three National Curriculum subjects - Maths, Science and Technology, based around a visit to a castle. The video follows the preparation, on-site work and follow-up in each subject as the teachers build the skills of the pupils and evaluate the success of their work. Suitability: In-service training; Initial teacher training. 17 minutes; 1992 **£11.95** **Product code:** XT 12080 **See also Education on Site**

Special offer

The following titles in this series have now been compiled on a single video at a special price: Art, music, English and Drama; History and Geography; The Key Stage 1 Curriculum and Maths, Science and Technology. 73 minutes; 1992 Suitability: In-service training; Initial teacher training **£18.95** **Product code:** XT 10039

Archaeology at Work

This series introduces the methods and the equipment used by archaeologists today from excavation and fieldwork to scientific techniques; from conservation in the laboratory to the management of our historic environment. The first two parts of this series deal with the discovery and excavation of sites, and are available together on one specially-priced video.



NEW

Looking for the Past

The first part examines archaeological methods for finding sites in the countryside and towns without digging for them. It shows and explains techniques such as aerial photography, looking at documents, surveying earthworks and field walking.

Uncovering the Past

The second part examines the work of archaeologists on two excavations: removing soil, uncovering features, recording, dealing with the finds and drawing the evidence together to make interpretations. It looks at the excavation of an Anglo-Saxon village and at a rescue excavation in Worcester. Suitability: Key stages 2 and 3; In-service training; adult education. 58 minutes; 1994 **£15.95** **Product code:** XT 10505

Archaeological Detectives

Archaeologists and historians often work like detectives, looking for clues to the past. This series aims to show children how enjoyable investigating historical evidence can be.

The Archaeological Detectives - investigating on site

This video explains the 'ground rules' for this active learning method through two primary school children, Gemma and William. Three very different sites are investigated - Wroxeter Roman City in Shropshire, Orford Castle in Suffolk and Appuldurcombe House on the Isle of Wight. Suitability: Key Stages 2 & 3 20 minutes; 1990 **£11.95** **Product code:** XT 10110 **See also Teacher's Handbooks**

Bits and Bodies

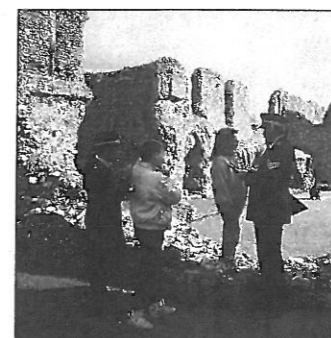
In an exciting series of games, three teams of children compete for the title 'Champion Detectives', working together by handling real archaeological finds and everyday objects. Teachers can adapt all the games for classroom exercises to develop skills and hands-on approaches in the use of evidence. Suitability: Key Stages 2 & 3 33 minutes; 1990 **£11.95** **Product code:** XT 10565 **See also Education on Site and Posters**

Clues Challenge

In this video two children visit modern locations familiar to them and apply detective skills which can be developed on later visits to historic sites. Basic clues are sought about a furnished house, an empty bungalow and a building site, and the children reach accurate conclusions from the visible evidence which the buildings reveal. Suitability: Key Stages 2 & 3 14 minutes; 1990 **£11.95** **Product code:** XT 10265

The Mystery

In this video two young people have the help of a police



detective team to try to solve the 'mystery' of an ancient monument - what were the buildings for and who lived there? The site used is Castle Acre Priory in Norfolk. Suitability: Key Stages 2 & 3 12 minutes; 1991 **£11.95** **Product code:** XT 11223

English Heritage Properties

This series introduces Historic Properties managed by English Heritage and encourages investigative learning approaches by looking at physical evidence of the past.

Boscobel House

Boscobel was an isolated Shropshire hunting lodge when the future Charles II fled there, hiding from the Parliamentarians in the famous oak tree and in the house itself. The video looks at the facts of his escape and the remodelling of the house with romanticised additions by Victorian owners. Suitability: Key Stages 2 & 3 10 minutes; 1990 **£11.95** **Product code:** XT 13082

Building an Abbey - medieval technology at Rievaulx Abbey

This video explains in very simple terms the reasons why such a large building stands up. Medieval engineering and the maths and technology of weight and strength are conveyed through a number of experiments performed by primary school children, all possible in the classroom. Suitability: Key Stages 2 & 3 14 minutes; 1988 **£11.95** **Product code:** XT 13083 **See also Discovery Packs**

Carey at Carisbrooke - how the Elizabethans modernised a castle

The medieval castle is seen through the eyes of Carey, the sixteenth-century governor of the Isle of Wight. His modifications and the reasons for them are looked at. Suitability: Key Stages 2 & 3 15 minutes; 1988 **£11.95** **Product code:** XT 13084 **See also Teacher's Handbooks and Posters**



Castles of Northumberland

This video looks at the siting of a castle and the different reasons they were built; Sections include 'Elements of a Castle'; 'Defending a Castle'; 'Looking at a Wall' and 'A place to live in'. All over England castles were developed on similar lines to those in Northumberland so the video will be useful throughout the country. Suitability: Key Stages 2 & 3 24 minutes; 1989 **£11.95** **Product code:** XT 13085

Dover Castle - the key of England

The location of successive fortifications on the hills above Dover has made the town the first line of defence for these islands since the iron age. Using air photography, reconstruction drawings and actual footage of the castle's role in the Second World War, the video explores how the defences have had to be continually modified as methods and means of war have developed. Suitability: Key Stage 3; GCSE; adult education. 12 minutes; 1981 **£11.95** **Product code:** XT 13088 **See also Teacher's Handbooks and Posters**